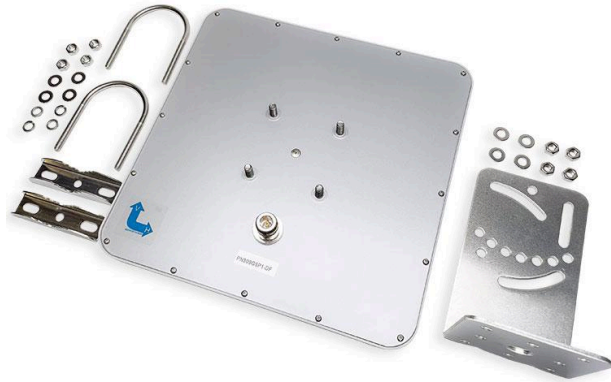


Lora 915MHz Panel Antenna



PRODUCT INFORMATION

| 915MHz Panel Antenna | |
|-----------------------------|--------------|
| Model Name | PN909G9P1-DF |
| Brand Name | APEX |

PRODUCT SPECIFICATIONS

| Electrical | |
|----------------------|------------------------|
| Frequency | 902MHz ~ 928MHz |
| Gain | 9 dBi |
| VSWR | < 1.3 typ. |
| Polarization | Vertical or Horizontal |
| Impedance | 50 ohms |
| Radiation | Directional |
| Vertical Beamwidth | 49 Deg |
| Horizontal Beamwidth | 52 Deg |
| Max. Power | 15 W |

| Physical and Environmental | | |
|-----------------------------------|-------|------------------------|
| Dimension (DxL) | mm | 230 x 230 x 43 mm |
| Antenna Weight | pcs/g | 713 g |
| Accessories | set/g | 300 g |
| Connector | - | Brass – N Female |
| Material | - | White Fiberglass |
| Operating Temperature | °C | -20 ~ +60 |
| Operating Humidity | - | 10%~80% non-condensing |
| Safety, Emission and Other | - | RoHS |

PACKING

| | |
|--------------|---------------------|
| PE Bag | 1 piece in a PE Bag |
| Carton | 10 pcs in a carton |
| Gross Weight | 13 kg |

V.S.W.R.

