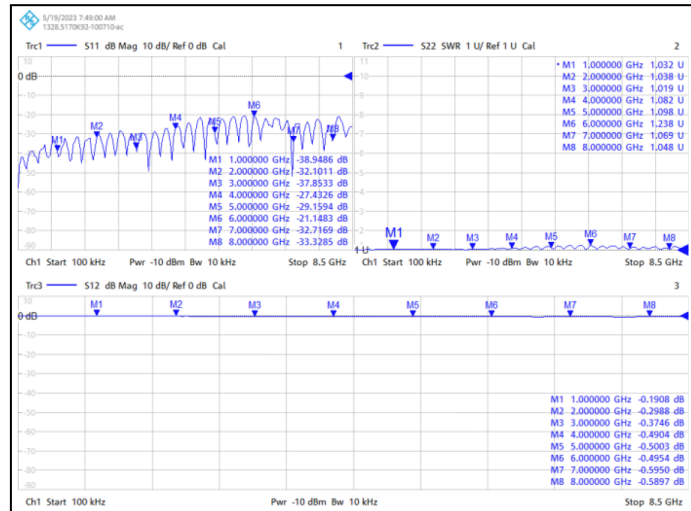


DC to 6GHz SMA Male To SMA Male for RG402 Low Loss Coaxial Cable Assembly

S-Parameters



PRODUCT INFORMATION

SMA Type Coaxial Cable	
Model Name	APR402
Part Number	APR402SASA
Brand Name	APEX

PRODUCT SPECIFICATIONS

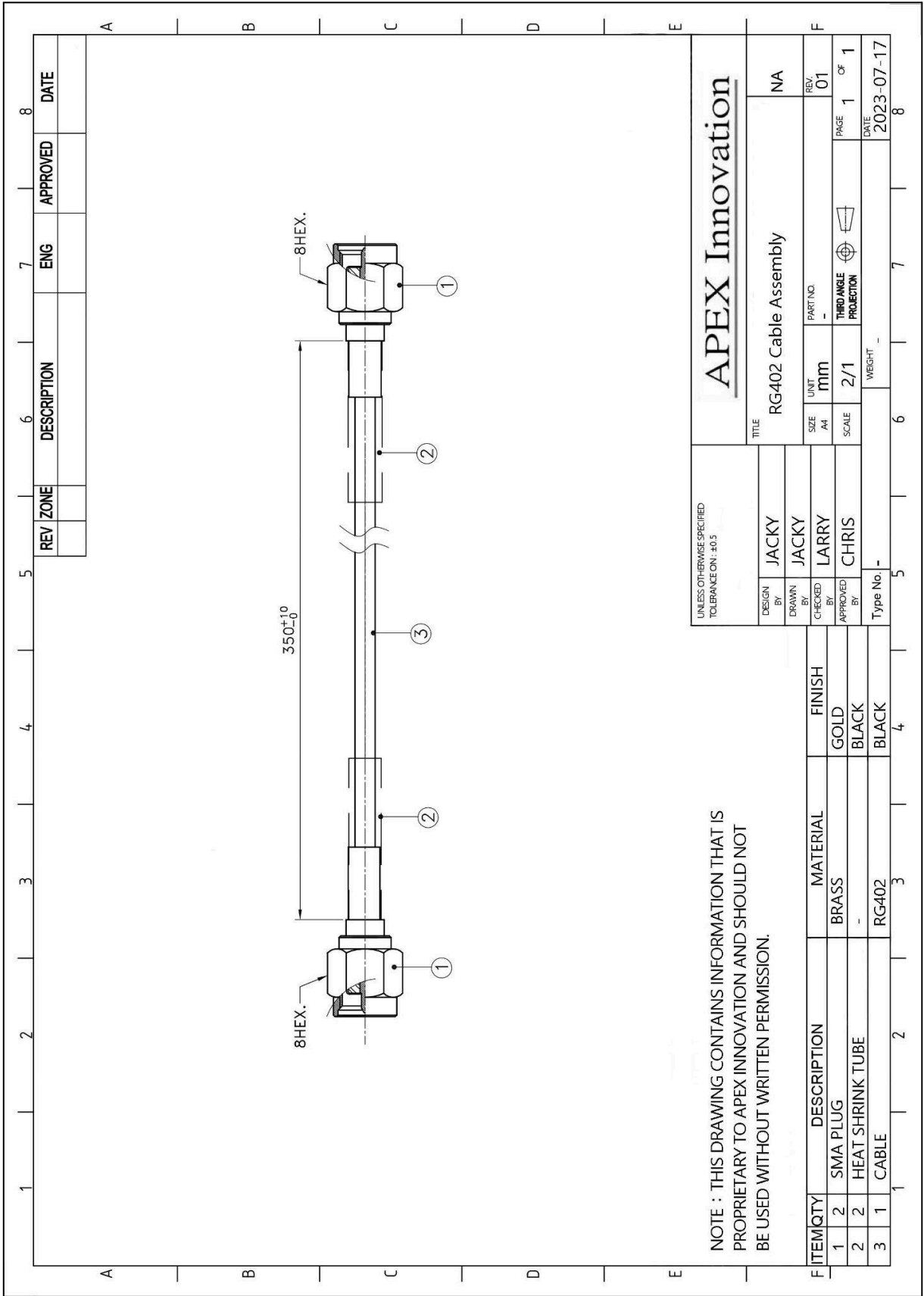
Electrical	
Frequency	DC to 6 GHz
VSWR	1.03:1 @ 1 GHz / 1.20:1 @ 6 GHz
Impedance	50 ohms

Physical and Environmental		
Cable Length	mm	350mm / 1M or customised
Weight	pcs/g	22.1 g
Connector	-	SMA Male or customised
Cable	-	RG402
Operating Temperature	°C	-40 ~ +65

PACKING

PE BAG	1 piece in a PE bag
Carton	500 pieces in a carton
Gross Weight	12 kg

OUTLINE



NOTE : THIS DRAWING CONTAINS INFORMATION THAT IS PROPRIETARY TO APEX INNOVATION AND SHOULD NOT BE USED WITHOUT WRITTEN PERMISSION.

ITEM	QTY	DESCRIPTION	MATERIAL	FINISH
1	2	SMA PLUG	BRASS	GOLD
2	2	HEAT SHRINK TUBE	-	BLACK
3	1	CABLE	RG402	BLACK

DESIGN BY		JACKY	TITLE		APEX Innovation	
DRAWN BY		JACKY	PART NO.		RG402 Cable Assembly	
CHECKED BY		LARRY	SIZE	UNIT	REV.	NA
APPROVED BY		CHRIS	A4	mm	01	
Type No. :-			SCALE	2/1	PAGE	1 OF 1
			THIRD ANGLE PROJECTION		DATE	2023-07-17
			WGT			8