

DC to 6GHz MMCX Plug to MMCX Plug for RG174 Low Loss Coaxial Cable Assembly

PRODUCT INFORMATION

MMCX Type Coaxial Cable	
Model Name	APR174
Part Number	APR174MAMA
Brand Name	APEX

PRODUCT SPECIFICATIONS

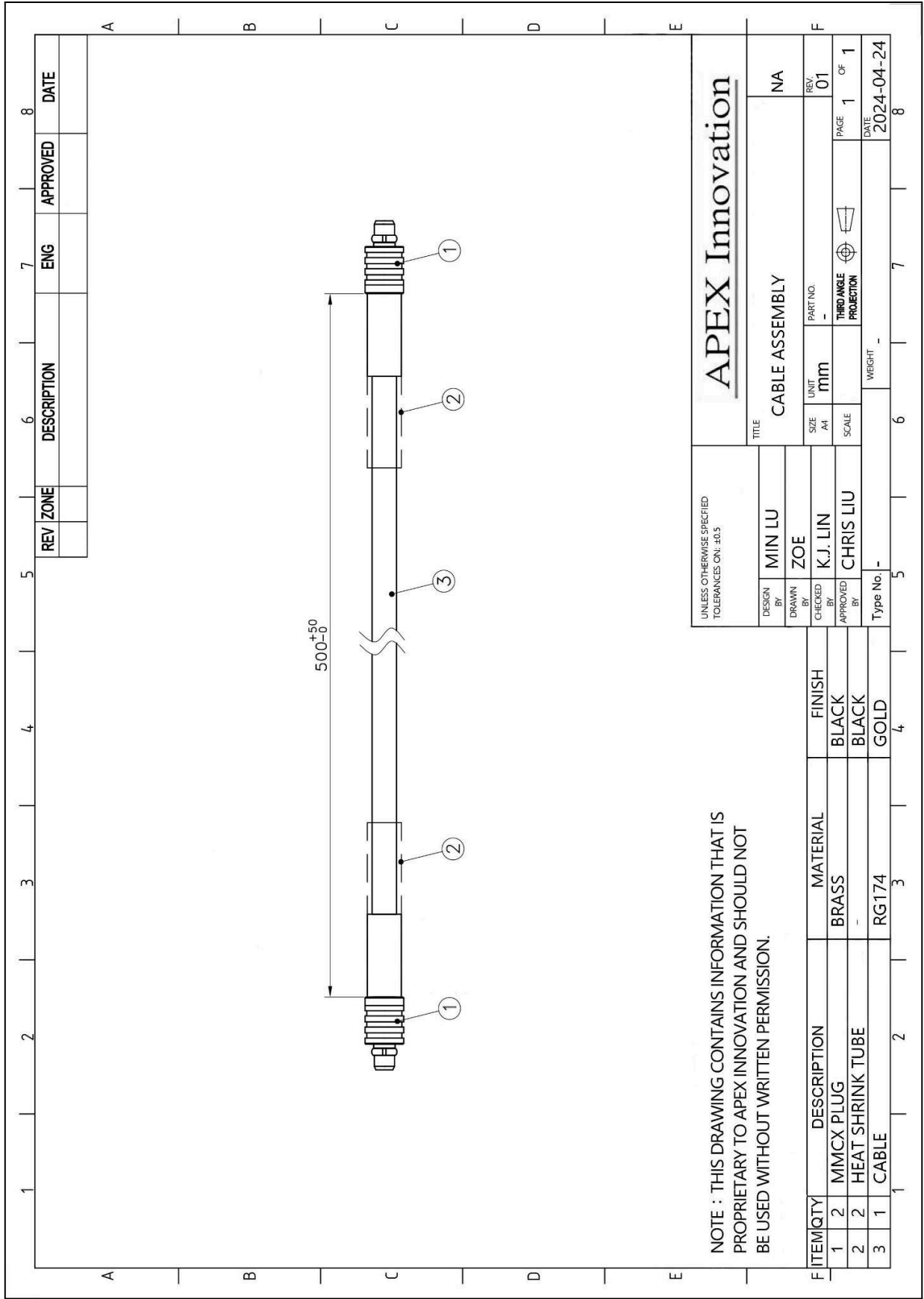
Electrical	
Frequency	DC-6GHz
VSWR	≤ 2 (With 300mm cable length)
Insertion Loss	< 1.5 dB
Impedance	50 ohms

Physical and Environmental		
Cable Length	mm	500 mm with RG174 or customized
Weight	pcs/g	45 g
Connector	-	MMCX / SMA / N plug or customized
Material	-	Ni/Brass & Gold-plated
Color	-	Black or customized
Operating Temperature	°C	-10 ~ +60
Storage Temperature	°C	-10 ~ +60

PACKING

PE BAG	1 piece in a PE bag
Carton	200 pieces in a carton
Gross Weight	10 kg

OUTLINE



NOTE : THIS DRAWING CONTAINS INFORMATION THAT IS PROPRIETARY TO APEX INNOVATION AND SHOULD NOT BE USED WITHOUT WRITTEN PERMISSION.

UNLESS OTHERWISE SPECIFIED TOLERANCES ON: ±0.5		APEX Innovation	
DESIGN BY	MIN LU	TITLE	CABLE ASSEMBLY
DRAWN BY	ZOE	SIZE	mm
CHECKED BY	K.J. LIN	UNIT	mm
APPROVED BY	CHRIS LIU	SCALE	
Type No.	-	THIRD ANGLE PROJECTION	
Weight	-	PAGE	1 OF 1
		DATE	2024-04-24

ITEM	QTY	DESCRIPTION	MATERIAL	FINISH
1	2	MMCX PLUG	BRASS	BLACK
2	2	HEAT SHRINK TUBE	-	BLACK
3	1	CABLE	RG174	GOLD