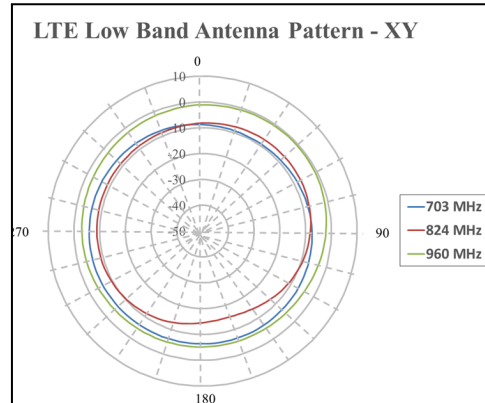


Lora Internal FPC Antenna

Antenna Radiation Patterns



PRODUCT INFORMATION

868MHz & 915MHz Internal Antenna	
Model Name	APF869I1
Brand Name	APEX

PRODUCT SPECIFICATIONS

Electrical	
Frequency	863 MHz ~ 928 MHz
Gain	-3.3 dBi
VSWR	≤ 4
Polarization	Vertical
Impedance	50 ohms
Radiation	Omni-directional

Physical and Environmental		
Dimension (DxL)	mm	82 x 14 x 1 mm
Weight	pcs/g	2.5 g
Cable Length	-	OD 1.37 / 155mm or customized
Connector	-	IPEX Plug or customized
Material	-	FPC
Operating Temperature	°C	-20 ~ +65

PACKING

PE BAG	50 piece in a PE bag
Carton	500 pcs in a carton
Gross Weight	1.5 kg

OUTLINE

