

DC to 6GHz SMA Plug to N Plug for CFD200 Low Loss Coaxial Cable Assembly



PRODUCT INFORMATION

CFD200 SMA to N Type Coaxial Cable	
Model Name	APD200
Part Number	APD200SANM
Brand Name	APEX

PRODUCT SPECIFICATIONS

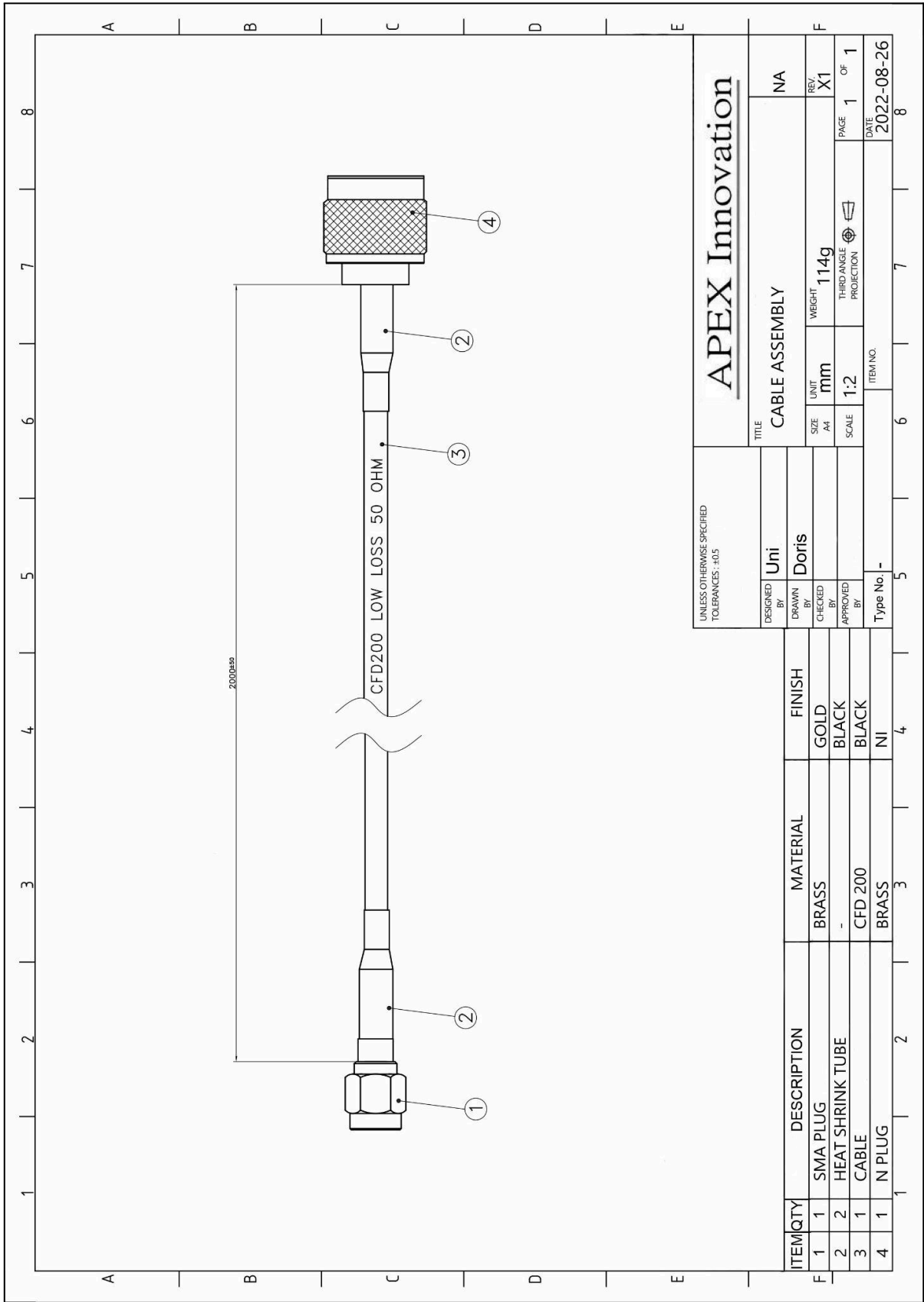
Electrical	
Frequency	DC-6GHz
VSWR	< 2 (With 2M cable length).
Insertion Loss	< 1.5 dB
Impedance	50 ohms

Physical and Environmental		
Cable Length	m	2M with CFD200 low loss or customised
Weight	pcs/g	114 g
Connector	-	SMA / N plug or customized
Material	-	Ni/Brass & Gold-plated
Color	-	Black or customized
Operating Temperature	°C	-10 ~ +60
Storage Temperature	°C	-10 ~ +60

PACKING

PE BAG	1 piece in a PE bag
Carton	200 pieces in a carton
Gross Weight	25 kg

OUTLINE



ELECTRICAL TEST

