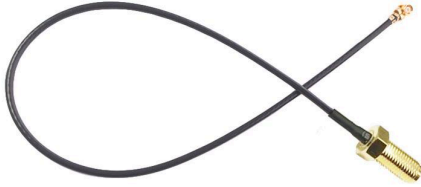


OD1.37 SMA to IpeX Coaxial Cable Assembly



PRODUCT INFORMATION

1.37 IpeX Coaxial Cable	
Model Name	APC37
Part Number	APC3711RF
Brand Name	APEX

PRODUCT SPECIFICATIONS

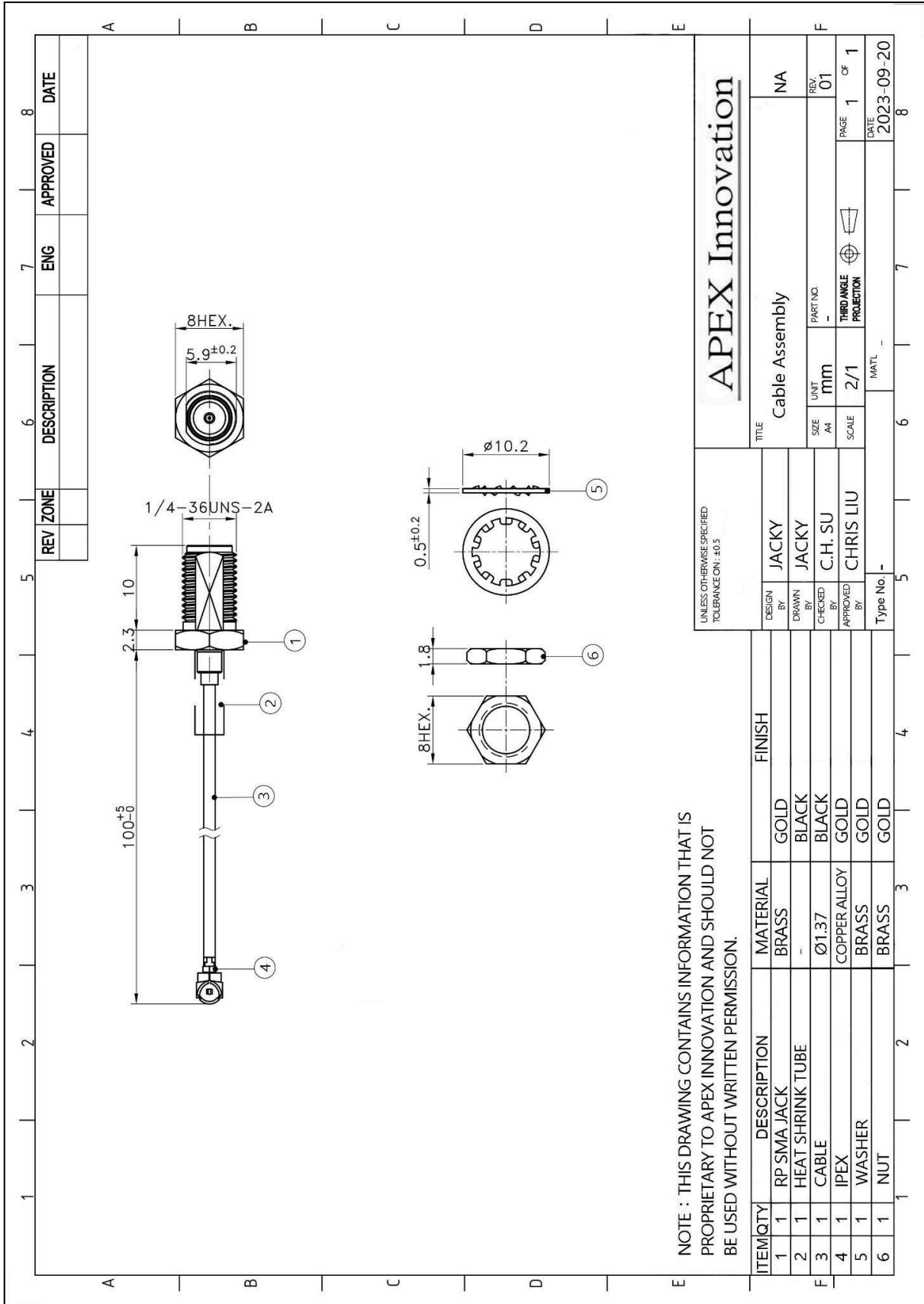
Electrical	
Frequency	DC-6GHz
VSWR	<2 (With 150 mm cable length)
Impedance	50 ohms

Physical and Environmental		
Cable Length	cm	100mm OD1.37 or customised
Weight	pcs/g	0.8 g
Connector	-	IPEX Plug / SMA or customised
Material	-	Ni / Brass
Color	-	Black

PACKING

PE BAG	10 pieces in a PE bag
Carton	1000pcs in a carton

OUTLINE



NOTE : THIS DRAWING CONTAINS INFORMATION THAT IS PROPRIETARY TO APEX INNOVATION AND SHOULD NOT BE USED WITHOUT WRITTEN PERMISSION.

UNLESS OTHERWISE SPECIFIED TOLERANCE ON: ±0.5		APEX Innovation	
DESIGN BY	JACKY	TITLE	Cable Assembly
DRAWN BY	JACKY	SIZE A4	UNIT mm
CHECKED BY	C.H. SU	SCALE	2/1
APPROVED BY	CHRIS LIU	PART NO.	NA
Type No. -		REV.	01
		THIRD ANGLE PROJECTION	PAGE 1 OF 1
			DATE 2023-09-20

ITEM	QTY	DESCRIPTION	MATERIAL	FINISH
1	1	RP SMA JACK	BRASS	GOLD
2	1	HEAT SHRINK TUBE	-	BLACK
3	1	CABLE	Ø1.37	BLACK
4	1	IPEX	COPPER ALLOY	GOLD
5	1	WASHER	BRASS	GOLD
6	1	NUT	BRASS	GOLD