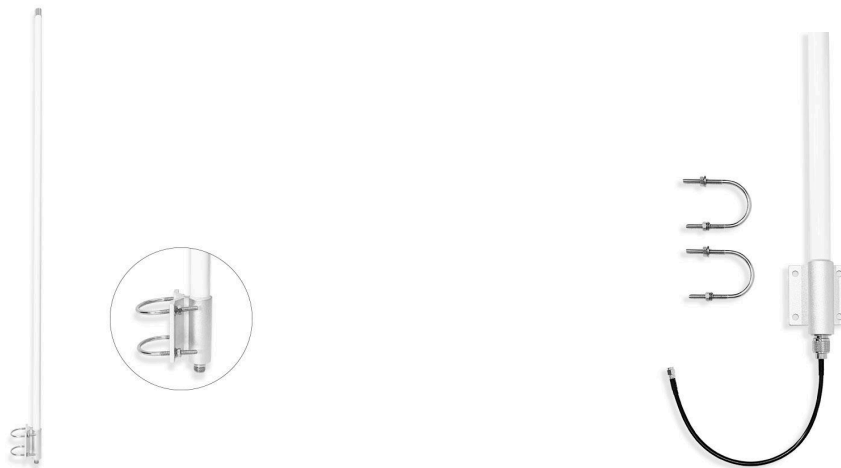


Lora 915MHz Fiberglass Antenna



PRODUCT INFORMATION

915MHz Fiberglass Antenna	
Model Name	AP909G8P1
Brand Name	APEX

PRODUCT SPECIFICATIONS

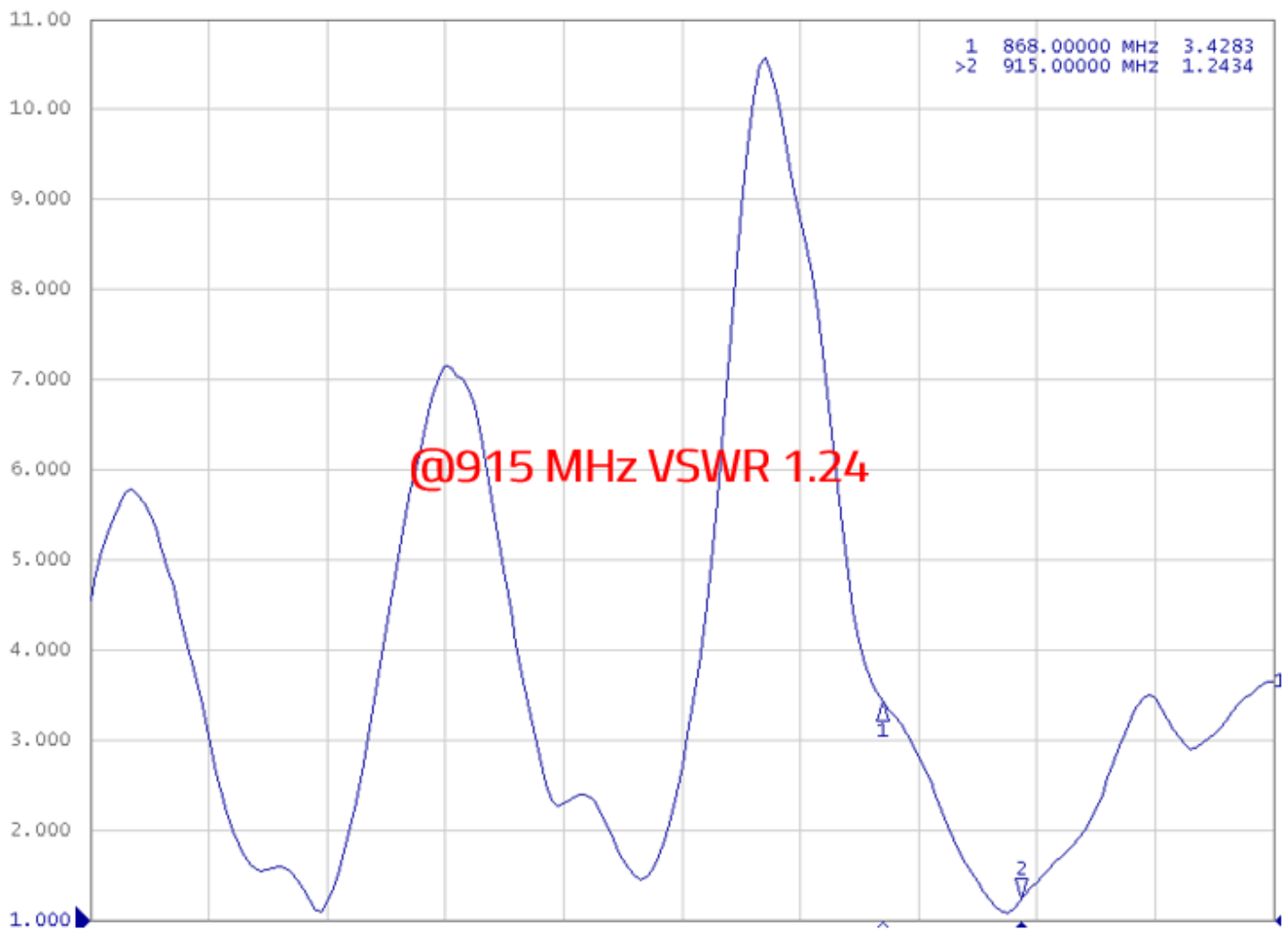
Electrical	
Frequency	902MHz ~ 928MHz
Gain	8 dBi typ.
VSWR	< 1.5 typ.
Polarization	Vertical
Impedance	50 ohms
Radiation	Omni-directional
Vertical	14 Deg
Horizontal	360 Deg
Max. Power	50 W

Physical and Environmental		
Dimension (DxL)	mm	1475 x 70 x 50 mm
Antenna Weight	pcs/g	860 g
Accessories (including U bolt)	set/g	70 g
Connector	-	Brass – N jack
Material	-	Fiberglass, White
Operating Temperature	°C	-20 ~ +60

PACKING

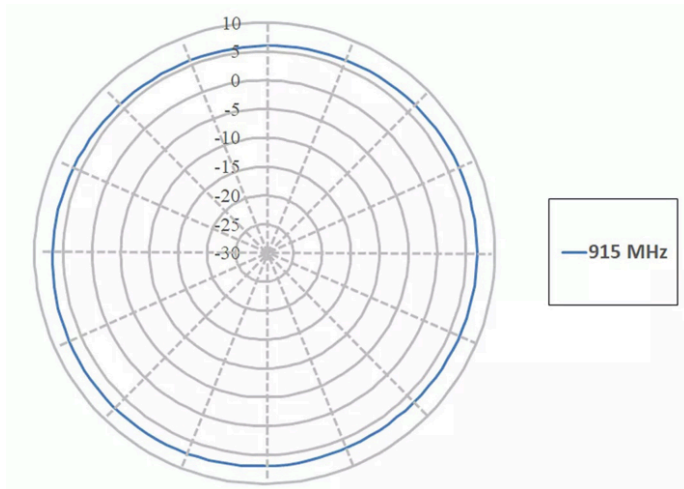
PE Bag	1 piece in a PE Bag
Carton	10 pcs in a carton
Gross Weight	13 kg

V.S.W.R.

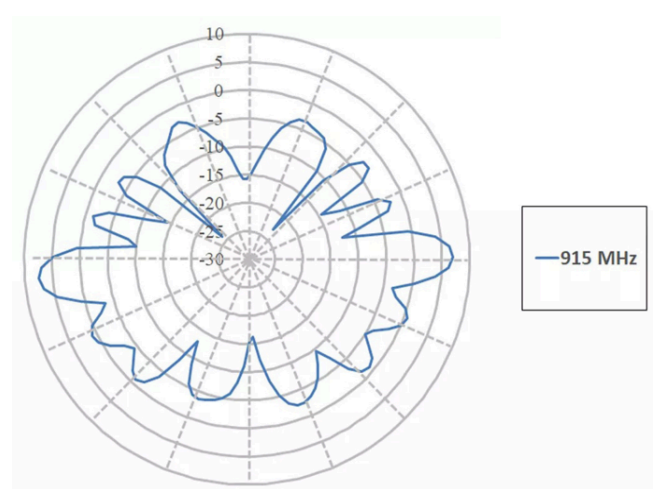


2D RADIATION PATTERNS

XY



YZ



XZ

