

Mini 2.4GHz Wifi Antenna



PRODUCT INFORMATION

2.4GHz External Antenna	
Model Name	AP245K1
Brand Name	APEX

PRODUCT SPECIFICATIONS

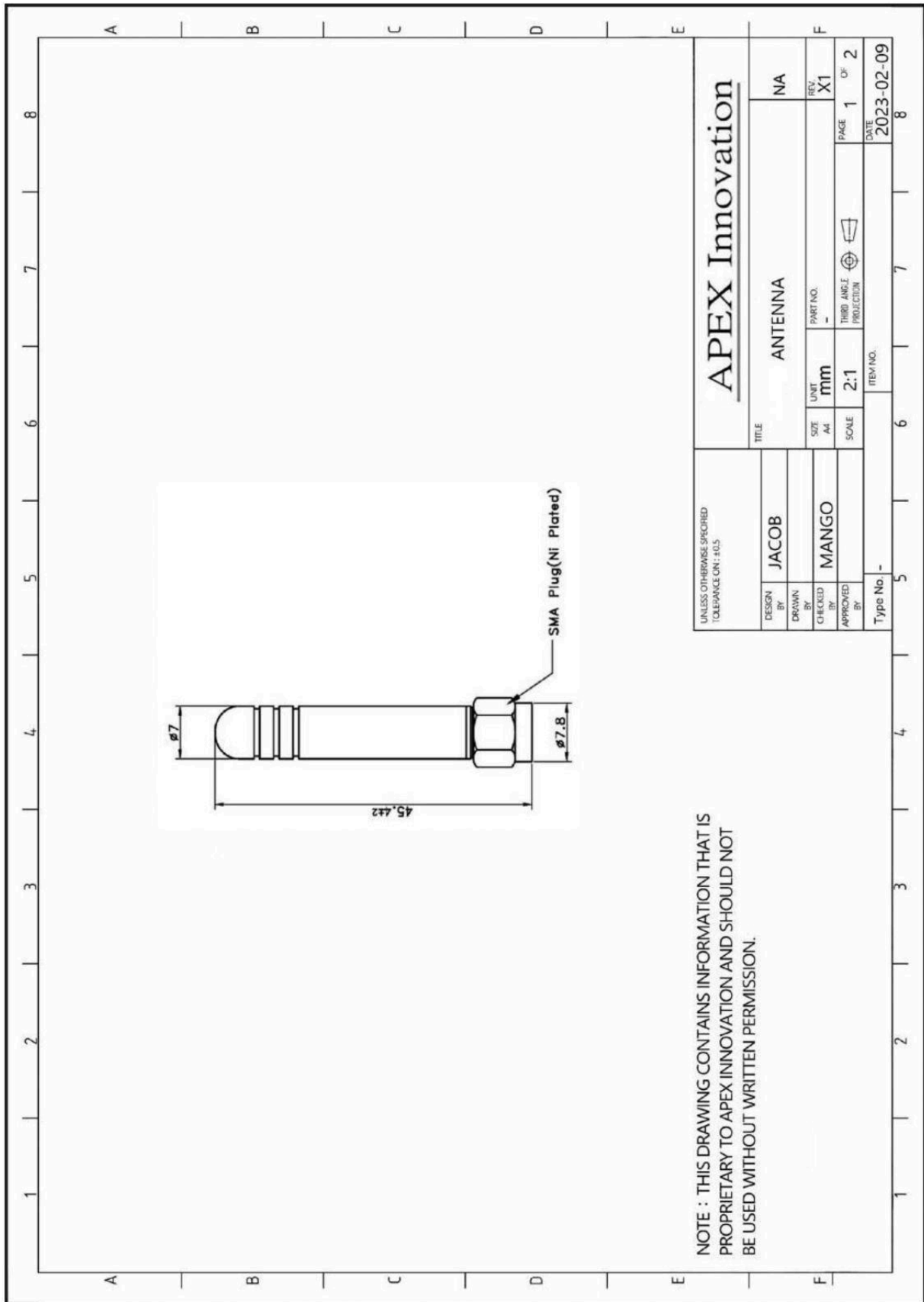
Electrical	
Frequency	2400 ~ 2500MHz
Gain	2dBi
VSWR	≤ 2
Polarization	Vertical
Impedance	50 ohms
Radiation	Omni-directional

Physical and Environmental		
Dimension (DxL)	mm	45.4 x 7 mm
Weight	pcs/g	4g
Connector	-	SMA PLUG
Material	-	TPE
Operating Temperature	°C	-20 ~ +65

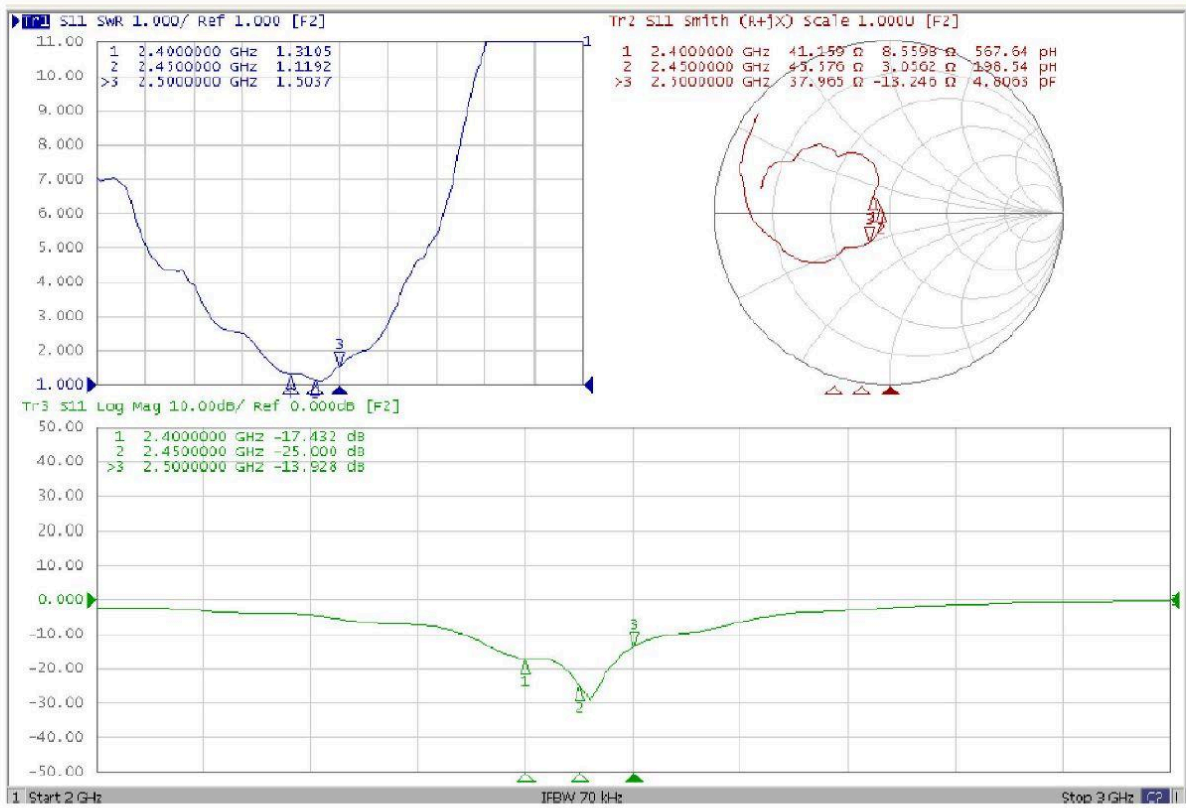
PACKING

PE BAG	1 piece in a PE bag
Carton	1000 pieces in a carton
Gross Weight	5kg

OUTLINE



ELECTRICAL TEST



ANTENNA EFFICIENCY

Frequency (MHz)	2400	2450	2500
Peak Gain (dBi)	2.21	2.46	2.45
Directivity (dBi)	5.94	5.98	5.05
Efficiency (dB)	-3.73	-3.52	-2.6
Efficiency (%)	42.38	44.43	54.92